

FCCBBQ

by The Flying Culinary Circus



ELECTRIC POWER

INSTRUCTION MANUAL & MAINTENANCE

FCC-EG-201900 / R0906-C

ENGLISH



OUTDOOR USE ONLY
READ THE OPERATING INSTRUCTIONS
BEFORE USING THE APPLIANCE.

Share the fun of cooking!

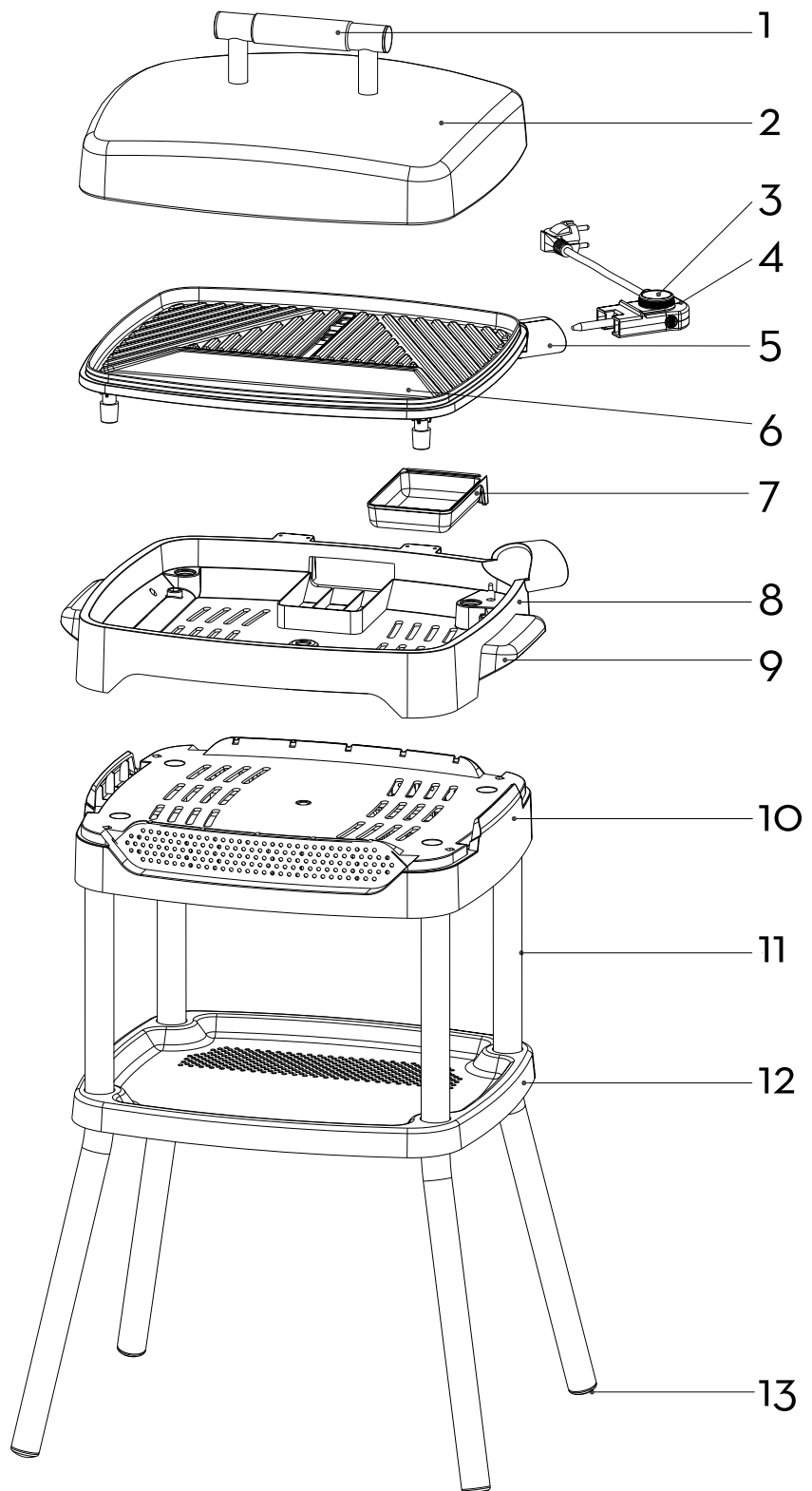
Contents

Description	3
Instructions	4
Warning	6
Before use	7
Safety regulations.....	8
Technical data.....	9
Cooking guidance	10
Tips / Cleaning	11
Consumer Contact	12



Description

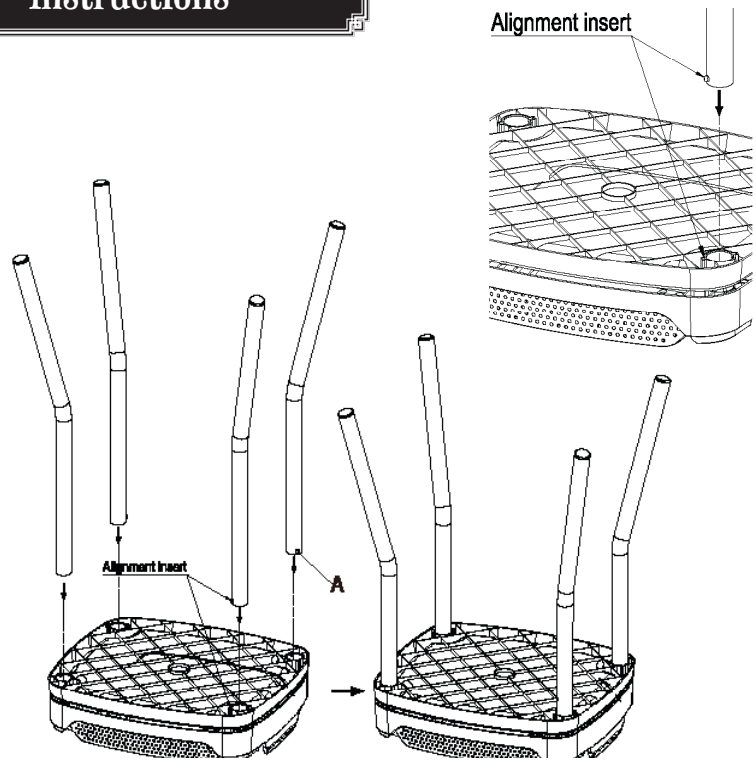
- 1.** Grill Lid handle
- 2.** Grill Lid
- 3.** Detachable temperature, regulator with power cord
- 4.** Temperature indicator lamp
- 5.** Power inlet socket
- 6.** Grill plate
- 7.** Oil collecting tray
- 8.** Grill holder
- 9.** Grill holder handle
- 10.** Grill bracket
- 11.** Support tube
- 12.** Food tray
- 13.** Support foot



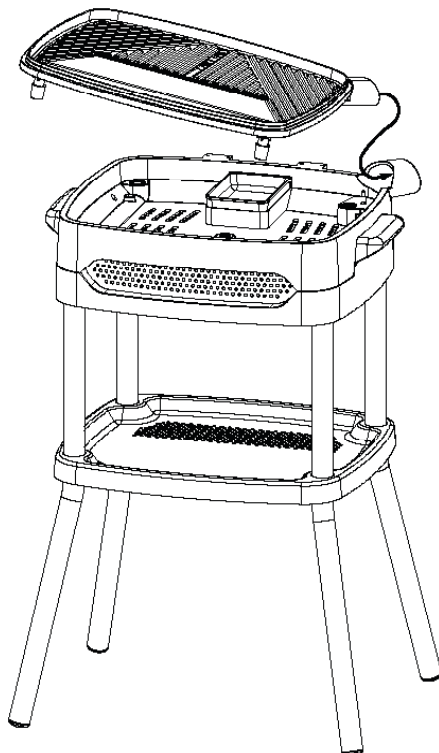
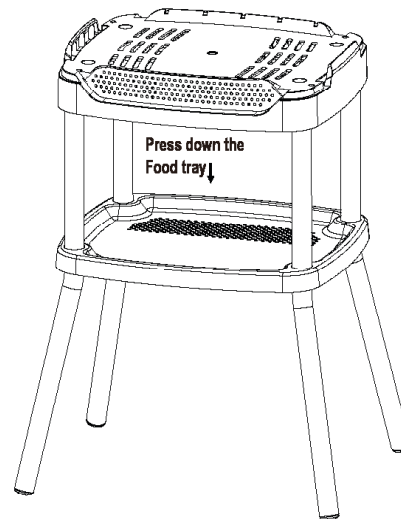
Instructions

1. Place the grill bracket(10) and the food tray(12)

Upside down on top of each other, the four supporting tube (11) through into Food tray (12) four column hole assembly move pin(A) hole gap alignment, The positioning pin of the four support tubes should be clamped into the positioning groove of the food tray and the grill bracket, and rotating the four supporting tube (11) until they get stuck.



2. Forward direction placement the grill bracket assembly. Press down the food tray near the supporting tube corner, check the grill bracket assembly are flat.



3. Set the BBQ grill holder(8) with the oil collecting tray(7) into the grill bracket(10) assembly

Instructions

4. Place the grill plate (6) in the grill holder BBQ (8)
Insert the inlet socket (5) of the grill plate into the grill holder of the socket hole , then lower the grill plate onto grill holder. Make sure it is cool and disconnected from the power.

ATTENTION!

THE GRILL PLATE(6) MUST ONLY BE USED TOGETHER WITH BBQ OF THE GRILL HOLDER(8)!

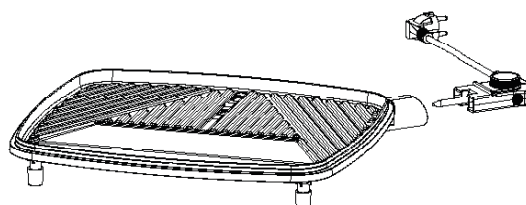
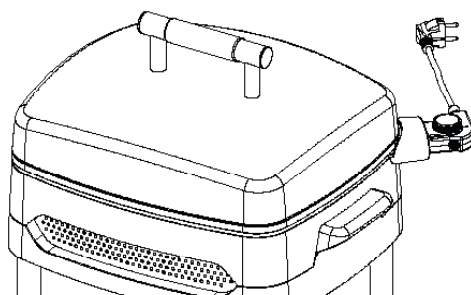
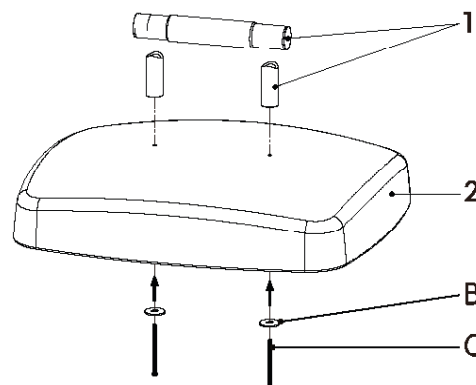
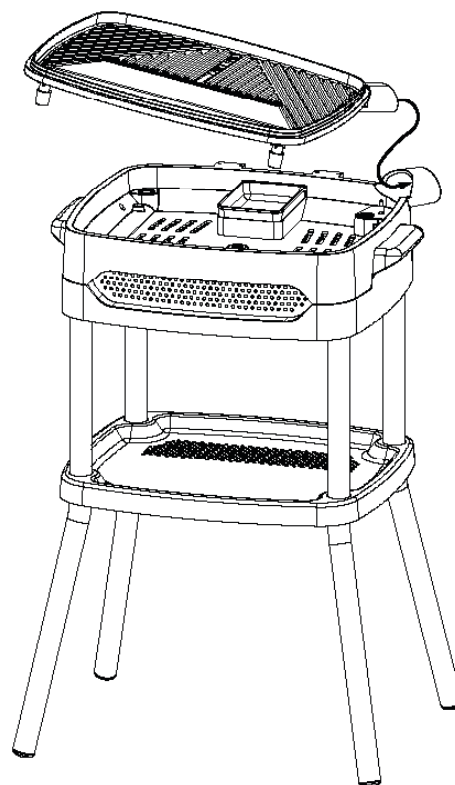
5. Use two m4x65 screws (C) respectively through a plain washer(B) and grill lid(2) into the handle (1).
Then screw clockwise. The screw(C) is installed on the handle (1).

6. the temperature regulator and the cable (3)
The electrical plug is inserted into the power socket.
When inserting or removing power cord shall be remained the grill holder(8) stable on the appliance

ATTENTION: THE BBQ ELECTRIC GRILL WITH THE GRILL PLATE(6) AND GRILL HOLDER(8). ASSEMBLY CAN BE TOGETHER FROM THE GRILL. BRACKET ASSEMBLY MOVE TO THE KITCHEN AS INDOOR USE.

RECOMMENDATION: NO GRILL LID FOR INDOOR USE

REMIND: THE GRILL PLATE(6) MUST ONLY BE USED TOGETHER WITH BBQ OF THE GRILL HOLDER(8)!



WARNING

- IF THE ELECTRIC GRILL IS USED AS A TABLE GRILL, IT MUST ONLY BE USED WITH THE GRILL PLATE AND THE GRILL HOLDER.
- KEEP THE GRILL AT LEAST 30 CM FROM ANY WALLS WHEN OPERATING. DO NOT SCREW DOWN THE PLASTIC FEET UNDER THE GRILL PLATE. THIS WOULD REDUCE THE REASONABLE GAP BETWEEN THE GRILL PLATE AND THE GRILL HOLDER, WHICH WOULD LEAD TO MELTING OF THE PLASTIC PARTS. THIS COULD LEAD TO SERIOUS INJURIES AND DAMAGE TO THE APPLIANCE.
- ATTENTION PLEASE TAKE CARE. AVOID TRIPPING OVER BY THE POWER CORD WHEN OPERATING THE APPLIANCE, ARRANGE THE POWER CORD SO ITS OUT OF YOUR WAY. REMEMBER TO REMOVE THE PLUG AFTER USE.

Before use

Please read these instructions carefully. They will give you important advice for the use, security and maintenance of this appliance. Keep these instructions and, should the situation arise, pass them on to other users. The appliance must only be used for the intended purpose according to these instructions.

- Observe any local regulations.
- Dispose of the packaging thoughtfully.

Before using the appliance for the first time:

- Remove all the packaging materials and wash the grill plate (6). Oil collecting tray (7) and grill lid (2) thoroughly.

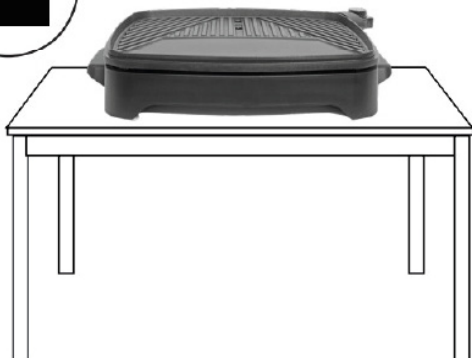
Important:

Dry all the different parts thoroughly. This applies especially to the power inlet socket(3). Never immerse the power cord with regulator() in water. Heat the grill to its maximum setting for about 3-5minutes,with the roasting hood in place and without any food. Residues left from manufacturing may cause some smell and smoke when the appliance is used for the first time.

Indoor usage

The appliance can be used indoors as a table grill. Hold the grill plate 4 and the grill holder 5 at the heat-insulated grill holder handles 11 and lift it from the mounting bracket 6.

Carry the table grill inside to use it indoors. Make sure to not trip over the power cord. Recommendation: It is recommended to not use the grill lid (2) indoors.



Outdoor usage



Safety regulations

- **This appliance is not meant for commercial use but exclusively for private use**
- This appliance can be used by children aged from 8 years and above and persons with reduced physical, sensory or mental capabilities or lack of experience and knowledge if they have been given supervision or instruction concerning use of the appliance in a safe way and understand the hazards involved shall not be done by with the appliance.Cleaning and user maintenance shall not be done by children without constant supervision.Keep the appliance and its cord out of reach of children less than 8 years.
- Plug the appliance only in on outlet as mentioned on the rating plate and only plus it into an earthed, three-pin socket.
- Use only one appliance per socket and use only earthed extension cables in safe condition,with earth wire cross section of at least 1.0mm-(capacity at least 10A).
- It is strongly recommend that power for any domestic appliance must only be supplied through a residual current devide(RCD) having a rated residual operating current not exceeding 30mA.
- Consult your electrician for details.
- Only the appropriate power cord as supplied with this unit must be used.
- The power cord should be regularly examined for signs of damage,and if the cord is damaged, the appliance must not be used.
- **The appliance must not be operated(disconnect the mains plug immediately) when:**
 - The appliance, casing or power cord is damaged.
 - The appliance shows visible signs of damage.
 - A fault is suspected after the appliance has been dropped or similar.
- **Switch off at the power point and disconnect the main plug.**
 - In case of faults during use.
 - Before cleaning or moving the appliance from place to place.
 - After use
- Please check the device and the power cord regularly,and stop using immediately by disconnecting the power cord from the power if you have any problems with the device.
- If the power line is damaged, it must be replaced by the manufacturer, its after sales department or similar professionals to avoid the risk
- Do not use this appliance within reach of water contained in bath-tubs,washbasins or other receptacles.Never expose it to rain,snow or other moisture.
- Position the power cord and cable so that unintentional touching or catching is impossible.
- Never allow the extension lead or power cord to be in touch with the hot grill plate.
- Don't pull the power cord over sharp edges, don't wedge (eg under doors etc.)
- Don't not stand the BBQ over the edge or corner of a table and avoid all contact with the BBQ hot surfaces.
- Don't not use the appliance without the oil collecting tray and the BBQ base all fitted properly together.
- Never cover the hotplate with aluminum foil for trays(this might damage the non-stick coating).
- Make sure without fail that this appliance is assembled correctly before use.
- Keep the electric grill at least 30cm from any walls when in operation.
- The temperature of accessible surfaces may be dangerously high when the appliance is operating. take care when the appliance is in use. Keep it away from combustible materials.
- Take care! The hotplate will get very hot, and it stays hot for a long time after it has been switched off. Beware of burns! Do not touch any hot surfaces and take care when handling the appliance after use.

Safety / Technical data

- Beware of fat oil or moisture spitting while grilling.
- Do not leave the appliance unattended when switched on or still hot.
- Do not touch the appliance(lid or grill plate) when cooking in order to prevent any risk of burning.
- Charcoal or similar combustible fuels must not be used with this appliance.
- **This appliance is intended to be used in household and similar applications such as:**
 - Staff kitchen areas in shops,offices and other working environments.
 - Farm houses.
 - By clients in hotels, motels other residential type environments.
 - Bed and breakfast type environments.
- Use this appliance only as described in this manual.Any other use not recommended by the manufacturer may cause fire, electric shock or injury to persons possibly resulting in depth or permanent disablement.
- This appliance is only to be used or cooking.
- Never pull the plug out of the socket by the power cord or with wet hands.
- For safety reasons do not use attachments that were not recommended or supplied by the manufacturer.
- Always switch off the appliance before removing the mains plug.
- Before removing attachments or cleaning the appliance,allow it to cool completely.
- The power cord must be removed before the appliance is cleaned and the appliance inlet must thoroughly dried before the appliance is used again.
- Never immerse the power cord or the thermostat plug in water or any other liquid.
- Never immerse the appliance with heating element,the appliance should be switched off at mains when not in use.
- Only professional trained personnel should repair electrical appliances.
- Unskilled repairs cause considerable danger to the user.
- **No warranty for any possible damage can be accepted if the appliance is used for improper purpose, wrongly operated or unprofessionally. In such a case,any warranty claim is void.**

MODEL	VOLTAGE	POWER	IP-CODE
FCC-EG-201900 / RO906-C	230V, 50/60Hz,	2000W	IPX4

DISPOSAL

- Disable unserviceable appliance immediately.Remove the mains plug and cut up the mains connection cable.If possible,bring unserviceable appliances to an official waste collection point. Many local authorities provide removal services for bulky refuse at least once a year.
- Please see separate sheet for warranty details.
- For service and warranty repairs please contact your place of purchase.



IPX4



- Connect the appliance to the mains electricity supply.
- Set the temperature regulator (3) to the required temperature level(it usually takes about 3 minutes to preheat).Preheating is faster with the roasting hood in place.
- The temperature indicator lamp (4) will go out as soon as the required temperature has been reached.
- Place the food to be grilled on the grill plate (6).

Cooking timers

- The following are recommended cooking times.Different times will be required for weights and sizes of foods to be grilled,and depending on whether you are grilling with or without the grill lid. weather conditions can also affect cooking times.
1. It will take approximately 3-5 minutes to heat up before barbecuing.Turn the temperature control switch 1-MAX (5) to MAX position. The Temperature indicator lamp will illuminate,at the same time the heating element will start to heat up.
 2. Now the food can be placed on the grill plate.Deep frozen food should be defrosted completely before barbecuing.
 3. You can adjust the temperature with the temperature control switch.Once the required temperature has reached,the pilot lamp will go out
 4. To switch off the barbecue,turn the temperature switch to "MIN" position and unplug the power cord from outlet
 5. Burn hazard! if for any reason/ the barbecue base must be moved when the appliance is still hot, always hold only by its heat-insulated handles and move it slowly.
 6. This table shows som guiding values for the cook the cook time of different barbecue food. The barbecue time can vary according to personal taste and the thickness of the meat.

FOOD	TEMPERATURE SETTING	APPROXIMATE COOKING TIME (MINS)
Steak/beef	5	15-25
Lamb	5	15-25
Chicken drumsticks	5	15-20
Chops	5	20-25
Chicken wings	5	15-20
Fillet of pork	4~5	10-15
Whole fish	5	10-15
Kebabs	3~4	10-20
Various sausages	3~4	10-15
Green pepper	3~4	5-10
Onion	3~4	10-15
Mushroom	3~4	5-10
Potato Slices	3~4	10-15

- Your meat will be more if you marinade in the refrigerator it over night before cooking(you can make your own marinade from oil (to aid moistness),vinegar,fruit juice or wine (to tenderize) and a mixture of seasonings for flavor).
- Always use tongs to turn grilled food (using a fork to turn the food will dry it out and damage the non-stick coating). Take care with tongs not to damage the non-stick coating.
- Only turn meat and fish once during grilling.You do not need to turn it more than once and too much turning dries food out.
- Never cook meat for too long. Even pork is better if it is served when it is still a little pink and juicy.
- If cooked food sticks to the grill plate,rub the plate with a piece of kitchen paper soaked in oil from time to time.

CLEANING

- Cleaning and looking after the appliance
- Disconnect the appliance from the mains electricity supply.
- Allow the grill to cool completely.
- Take the temperature Regulator with power cord (3) out of the appliance socket (5).
- Clean the grill plate(6) and Oil collecting tray (7) with warm washing-up water and a damp cloth.Do not use steel wool pads,brush or abrasives to avoid any damages to the coating of grill plate.
- Wipe the holder (8) of the appliance with a damp cloth. Fat splashes can be removed with a mild cleaning agent.

Note:

- The grill plate has a non-stick coating.Do not scratch this coating during either the cooking or the cleaning stages.

TIP:

- Protect the appliance from dust and dirt if it is not to be used for a prolonged length of time (dry thoroughly then wrap it in a plastic bag).
- Store it in a cool dry place.

Consumer contact

This product is covered by a warranty in accordance with consumer legislation. It has undergone strict quality controls and testing at the factory.

If there are any parts missing or the product has been damaged, please contact your dealer or the consumer contact below for help.

Faults due to misuse, lack of maintenance or modification of the product will invalidate the warranty. Damaged parts not due to a fault with the product will be invoiced according to our price list + carriage and administration fee.

If new parts are needed or in the event of a warranty claim, please contact your dealer or consumer contact:

FCC PRODUCTS AS

KJELLER VEST 3, 2007 KJELLER, NORWAY

☎ +47 924 78 600

✉ support@fccproducts.no

www.fccproducts.no

Support opening hours: 10-14

Always attach your receipt and product serial number when making a warranty claim.
Serial number is located on the side of the BBQ.

Produced in China for FCC Products Co., Ltd.

We are always looking for ways we can improve our products. Therefore, we reserve the right to change technical specifications at any time. You will always find the latest manual on www.fccproducts.no.